

Global Fasteners Supply

www.ProrsumGroup.com

PGHL@ProrsumGroup.com

Tel: +852 2172 7172 Fax: +852 2172 7403



Collaborating Global Supply Chain
協同環球供應鏈

葉海京 董事總經理
Lawrence YIP MBA
Managing Director

T +852 2172 7172
F +852 2172 7403
M +852 9191 1266
+86 136 1283 5800 (China)

lawrence@prorsumgroup.com
www.ProrsumGroup.com

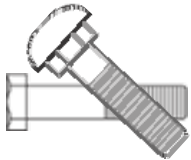
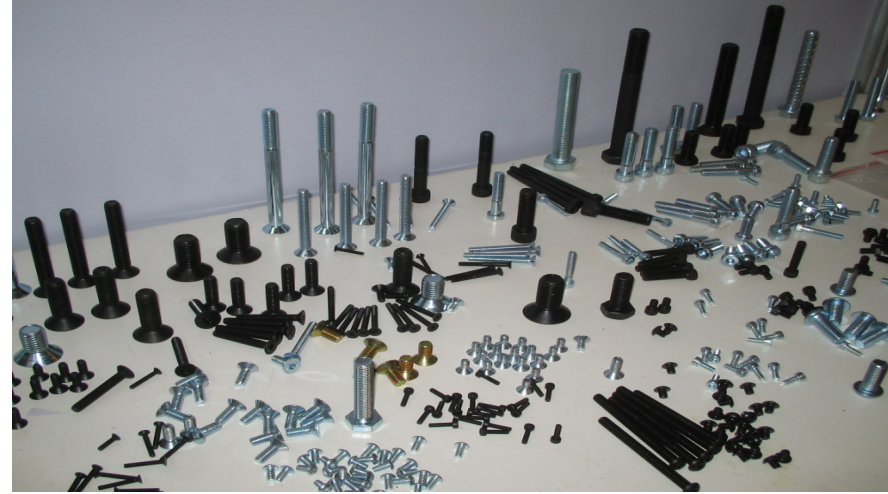


Collaborating Global Supply Chain 協同環球供應鏈

website www.ProrsumGroup.com

SPECIFICATIONS

- Standards** : DIN / BS / EN / IFI / ISO / ANSI / ASTM / AISI / JIS
- Materials** : Carbon Steel / Iron / Mild Steel / Stainless Steel (A2/A4) / Aluminum / Titanium / Brass / Copper / High Tensile
- Threads** : BA / UNF / UNC / BSW / BSF / FINE & EXTRA FINE
- Finishes** : Zinc-Plated, Black, HDG, CDG, Galvanized, Tin, Nickel



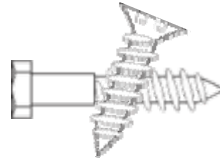
Bolt

Hex Cap Screws
Hex Machine Bolts
Flange Bolts
J Bolts
Tap Bolts
Wheel Bolts
Structural Bolts
Carriage Bolts
Lag Bolts
Square Head Bolts
Plow Bolts
Anchor Bolts
Eye Bolts
U Bolts
Toggle Bolts
T Slot Bolts



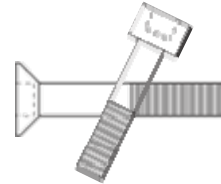
Nut

Flange Nuts
Push Nuts
Weld Nuts
Slotted & Castle Nuts
Tee Nuts
Hex Nuts
Hex Jam Nuts
Nylon Insert Lock Nuts
Keps Nuts
Pal Nuts
Wing Nuts
Acorn & Cap Nuts
Coupling Nuts
Left Hand Nuts
Square Nuts
Machine Screw Nuts



Screw

All Head & drive
Tapping Screws
Self-threading Screws
Machine Screws
Wood Screws
Thumb Screws
Self Drilling Screws
Sems Screws
Particle Board Screws
Weld Screws
Security Screws
Drywall Screws
Type U Drive
Furniture Screws



Socket

Socket Head Cap Screws
Socket Set Screws
Flat Head Socket Cap Screws
Low Head Socket Cap Screws
Square Head Set Screws
Shoulder / Stripper Bolts
Button Head Socket Cap Screws
Hex Keys
Specials & Semi-Standards

Miscellaneous

Springs
Rivets
Studs
Threaded Rod
Retaining Rings
Auger Bits
Fittings



Washer

USS & SAE Flat Washers
Split Lock Washers
Ext & Int Tooth Lock Washers
Fender Washers
Bevel Washers
Wave Bellville
All Specials

Pin

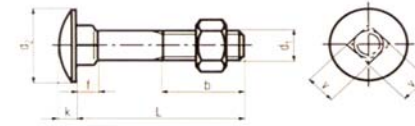
Cotter Pins
Dowel Pins
Pull-dowel Pins
Spring Pins / Roll Pins
Spirol Pins
Clevis Pins
Taper Pins
Groove Pins
Hitch Pins



Carriage Bolt and Hex Flange Nut

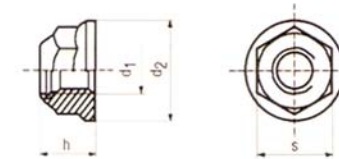


CARRIAGE BOLT: ANSI/ASME B18.5-1978 IFI C-40



DIA	d1		d2		R		V		f		
	MAX	MIN	MAX	MIN	MAX	MIN	MAX	MIN	MAX	MIN	
3/8"	0.375	0.38	0.36	0.344	0.782	0.208	0.188	0.388	0.368	0.219	0.188

HEX FLANGE NUT



IFI-145	DIA	d1	S		h		d2		NON STANDARD		
			MAX	MIN	MAX	MIN	MAX	MIN	d2 7/8"	d2 1"	
3/8"	0.375	0.362	0.551	0.547	0.33	0.75	0.728	0.895	0.852	1.022	0.926





Our reliable and customized services help you to reach the following goals:

- Cost saving from off-shore production and purchasing
- Increase cash flow and re-focusing on corporate resources and competencies
- Reduce inventory and cutting handling cost
- Better leverage or lesser space on warehouse
- Enhance management efficiencies and overall operation productivity
- Streamline activities in purchasing, quality control, logistics and distribution



We delivery what we committed !



- ✓ Products in excellent quality and correct specification
- ✓ Competitive pricing
- ✓ Reliable services & professional people
- ✓ Quick delivery time with huge production capacities
- ✓ Wide variety of items selection (specifications, standards /grades, sizes, materials and finishing)
- ✓ Value-added solutions (customized packaging in plastic bags or carton boxes or pallets, kitting, stock keeping & controlling, auto-replenishment, vendor managed inventory, just-in-time delivery)
- ✓ Sourcing the hardest to find items, tailor-making, samples & prototypes, OEM / ODM
- ✓ Global logistics & distribution solution (Door-to-Door, Port-to-Port in Full-Container-Loaded / Less-Than-Container-Loaded)
- ✓ Buyer cargo consolidation with multi-vendors' commodities from multi-locations
- ✓ Flexible trade terms (FOB, CFR, or landed cost with customs clearance and import duty & tax paid)
- ✓ ISO-9002 systems and quality assurance in place from ordering to producing to delivering